

Faculty preliminary

Alexandr **Mitrakov** , Sergey **Gamaynov**, Diana **Davydova**, Vladimir **Kriazhov**, Roman **Gagaev**, Michail **Timoshenko**
Nizhniy Novgorod Cancer Hospital, Privolzhskiy Res. Med. Univ., Ankydinovskoe Str. 1, 603081 Nizhniy Novgorod, RF

Frieder **Berr**, Andrej **Wagner**
Paracelsus Medical Univ, Dept. of Medicine I, 5020 Salzburg, AT

Michail **Agapov**
Dept Medicine, St.-Petersburg Cancer Hospital, St. Petersburg, RF

Sergey **Pirogov**
Hertsen Oncology Research Center, Moscow, RF

Hans **Seifert**
Dept. Gastroenterologie, Evangelisches Krankenhaus, 26122 Oldenburg, DE

Evgeny **Solonitsyn**
Dept. of Endoscopy, Almazov Nat. Medical Research Centre, St.-Petersburg, RF

Takashi **Toyonaga**
Division of Gastroenterology, Dept.of Internal Medicine, Graduate School of Medicine, Kobe University, 7-5-1 Chu-o-ku, Kusunoki-Cho, Kobe, Hyogo 650-0017, JP

Naohisa **Yahagi**
Cancer Center, Keio University School of Medicine,,35 Shinanomachi, Shinjuku-ku, Tokyo, 160-8582, JP

Alexey **Zhdanov**
Samara State Medical University, Chapayevskaye St 89, Samara 443099, RF

Alexander **Ziachehabi**
Dept. of Endoscopy, AKH / Univ. Hospital, Johannes Kepler Univ., 4010 Linz, AT

Registration

No participation fee

Registration: endo22@pimunn.ru

- mandatory SARS-Cov2 immunity (vaccinated or COVID-recovered)

Contact Information

Alexandr Mitrakov

email: endo22@pimunn.ru

URL: www.early-cancer.eu

Venue

Privolzhskiy Research Medical University
(& Nizhniy Novgorod Cancer Hospital)
Minina and Pozharskiy square 10/1
603000 Nizhniy Novgorod
Russia
<http://www.pimunn.ru>



Cancelled because of Ukraine war - DE or AT has now failed translocation to DE or AT

Endo Skill Update

Early Gastrointestinal Cancer

Nizhniy Novgorod, June 25, 2022



Endorsed by



REndO
DGVS

Privolzhskiy Research
Medical University



Nizhniy Novgorod
Cancer Hospital



ГБУЗ НО «НОКОД»
Клинический онкологический диспансер

Organizers

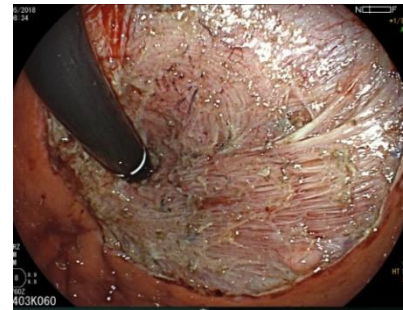
Mitrakov A	Agapov M	Berr F	Gamaynov S
Mitrakov A	Pirogov S	Toyonaga T	Yahagi N.
Agapov M	Gagaev R	Seifert H	Wagner A
Berr F	Kriazhov V	Solonitsyn E	Ziachehabi A

Patient advocate Zhdanov A

endo22@pimunn.ru

Credits (re-submitted to UEMS for ECMEC®)

Contact www.early-cancer.eu





Dear Colleagues,

we invite you to improve your skills in endoscopic analysis, therapeutic decision making and endoscopic resection of early neoplasias of the gastrointestinal tract:

- Accurate endoscopic assessment of surface and microvascular structure for prediction of pT category
- Indications for endoscopic versus minimal invasive surgical resection techniques
- Techniques for endoscopic en-bloc resection

This meeting focuses on aspects to optimize endoscopic analysis and staging of early neoplasias as well as strategies and performance of minimally invasive resections – to enhance proficiency in this new field.

We hope to stimulate your interest and welcome you to the Endo Skill Update 2022.

S Pirogov
Hertsen Oncology
Research Center,
Moscow

A Mitrakov
Nizhniy Novgorod
Center, Center,
PRMU
Nizhniy Novgorod

B Furrer
Paracelsus
Medical Univ.,
Salzburg

cancelled because of Ukraine war - translocation to DE or AT has now failed

Program

8:00 Welcome S Pirogov

Session I - 8:15 - 10:30

Endoscopic T-staging & ESD Strategy

Chairs: Mitrakov A, Pirogov S, Yahagi N,

10:30 - 11:00 Coffee break and Industry Exhibition

Session II - 11:00 - 12:30

Indications and ESD of GI Neoplasia's

Chairs: Davydova D, Seifert H, Ziachinskiy A

Yahagi N **How to stage early cancer in the GI tract** (Yahagi, 25min)

Davydova D **Histopathology demo. (3 cases of June 23), criteria for curative resection** (25min)

12:30 - 13:30 Lunch and Industry Exhibition

Session III - 13:30 - 16:15

ESD Strategy and Prevention / Management of Complications

Chairs: Agapov M, Mitrakov A, Toyonaga T

Solonitsyn E: **How to assess resectability and prevent or manage complications** (Digivote, 30 min)

Conclusions and Farewell Toyonaga T, Mitrakov A

LIVE demonstrations

- Endoscopic staging & indication (1 h, 4 cases)
- En-bloc resection (4 ½ h, 4 cases)

Toyonaga T
lesion e.g. GE-junction, AdenoCa
Diagnosis Timoshenko M
comments Solonitsyn E

Agapov M
LST anorectal
Kriazhov V
Berr F

Yahagi N
lesion e.g. LST colon
Diagnosis Gagayev R
Comments Ziachehabi A

Wagner A
gastric or esophageal NPL
Kriazhov V
Berr F



pending
UEMS

